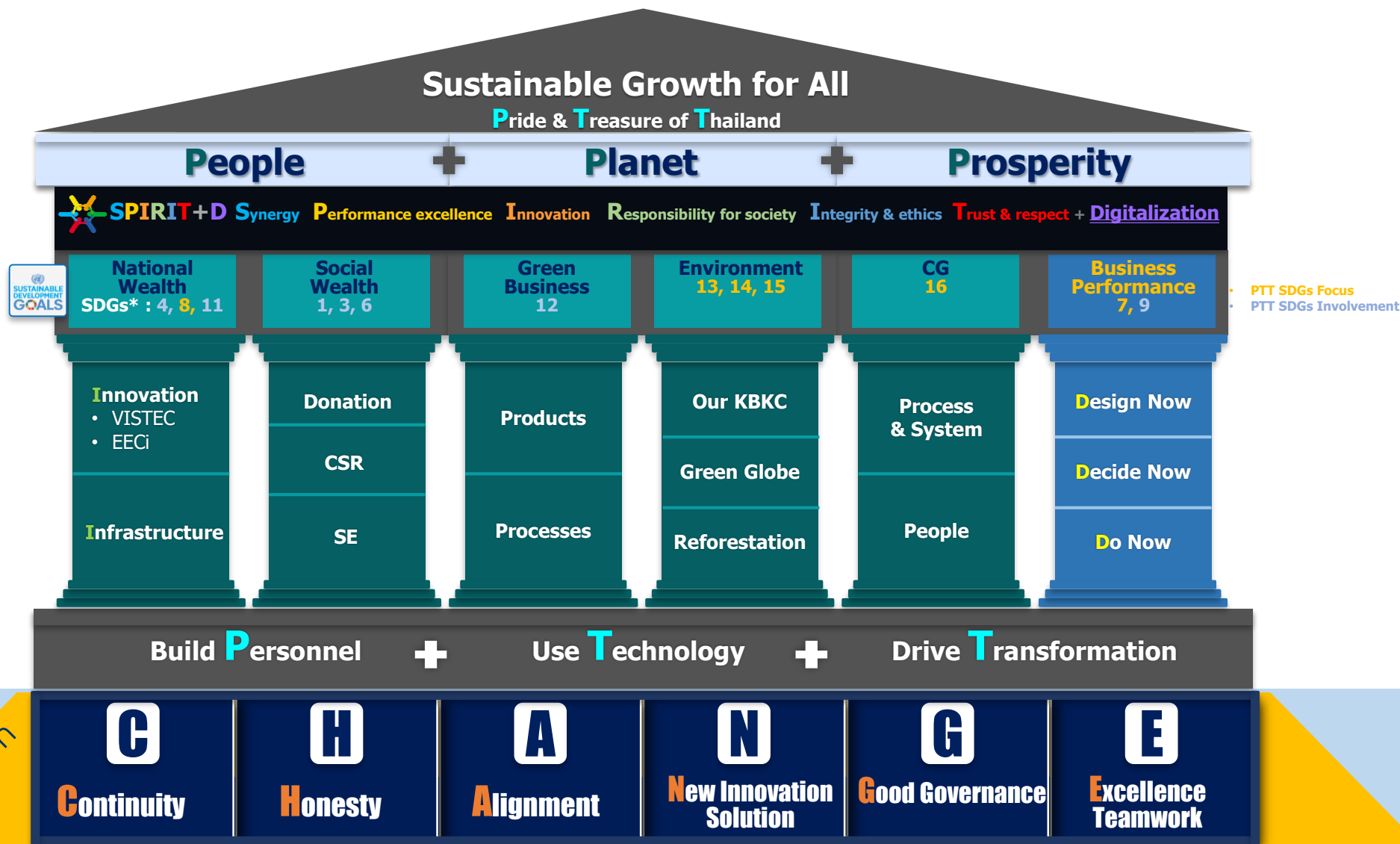


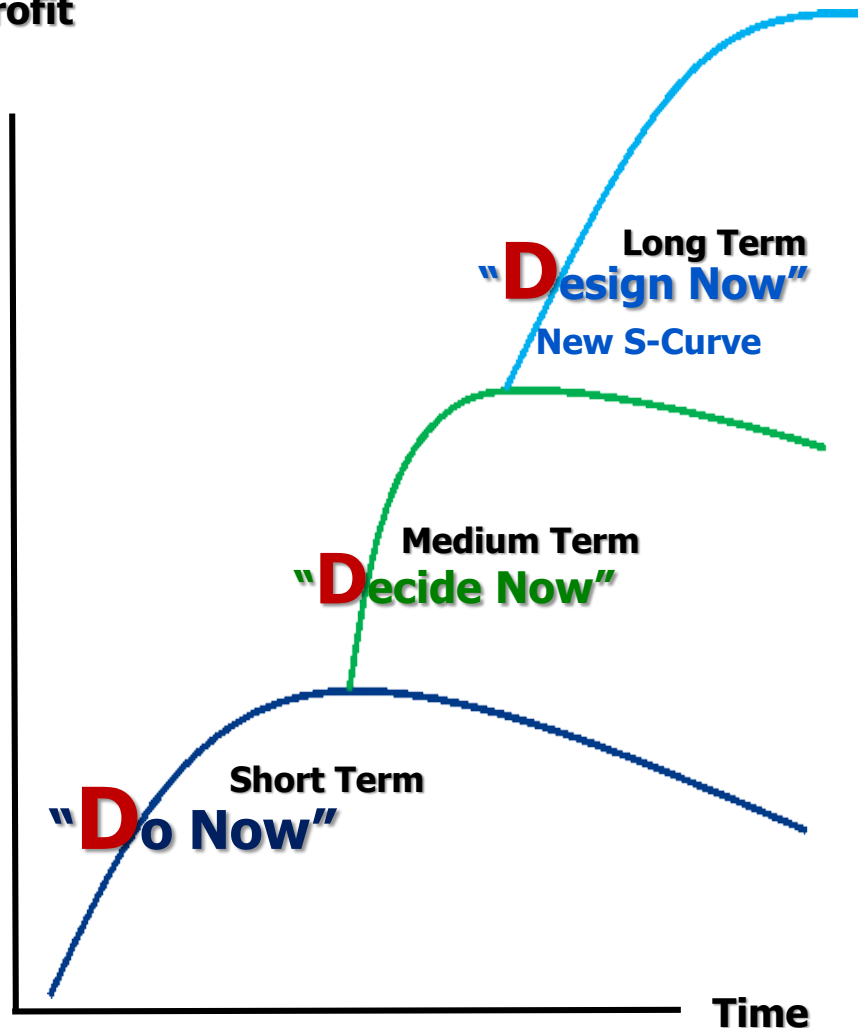
CAPEX Plan 2019-2023

Conference Call
21 December 2018





Profit



PRIDE

- EECi @ Wangchan Valley Projects

New S-Curves

- New Businesses : Life Science, Material Science, Robotics/AI, Startup, CVC, Smart City, Property Development
- ELC : Electric Vehicles, Energy Storage

Expand Business along Value Chain

- Core Business Expansion :
 - LNG Value Chain
 - 2nd LNG Receiving Terminal
 - PTT Group Downstream Logistic
 - Gas to Power
- International Expansion : Oil and Non-Oil, Terminal
- Opportunity Investment in EEC

Enhance Competitiveness

- Digitalization to Improve Productivity
- BAU/Existing Investment

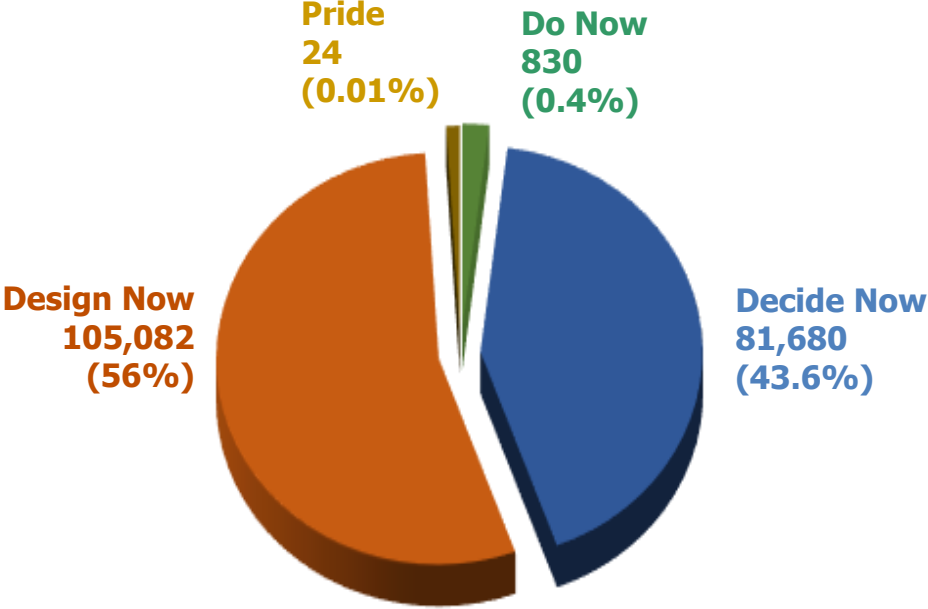
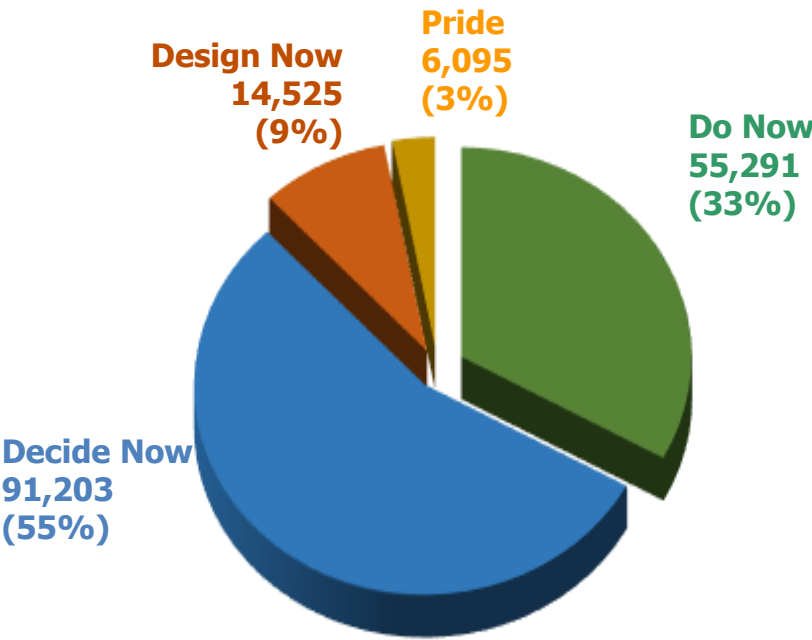
5-Year CAPEX (2019-2023) by PRIDE & TREASURE (3D)

Do Now **Decide Now** **Design Now**

Unit: MMTHB

Committed CAPEX = 167,114

Provisional CAPEX = 187,616



Do Now
Productivity and BAU



Decide Now
Growth



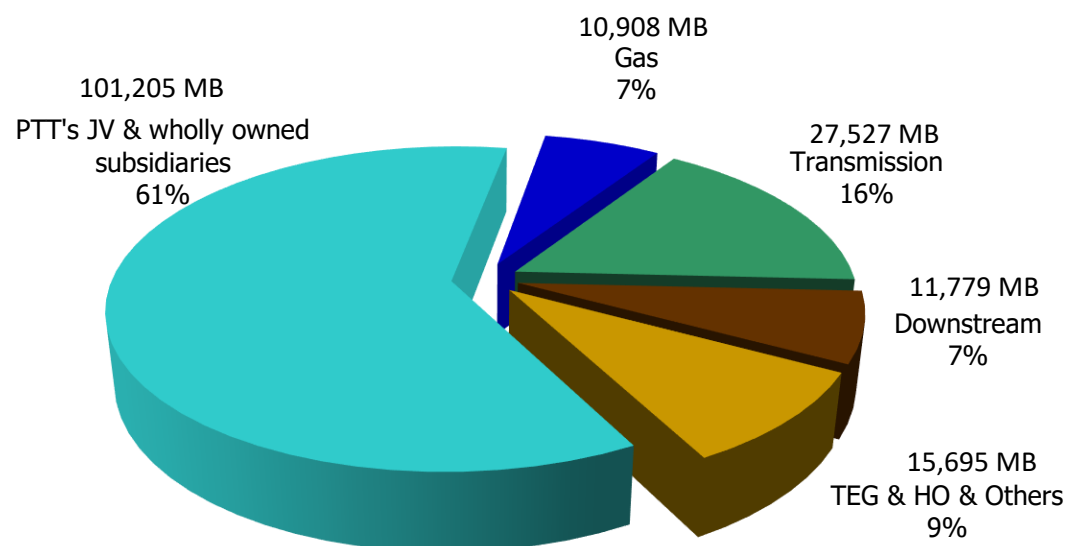
Design Now
New S- Curve



Pride

PTT: Committed CAPEX (PTT and Wholly Owned Subsidiaries)

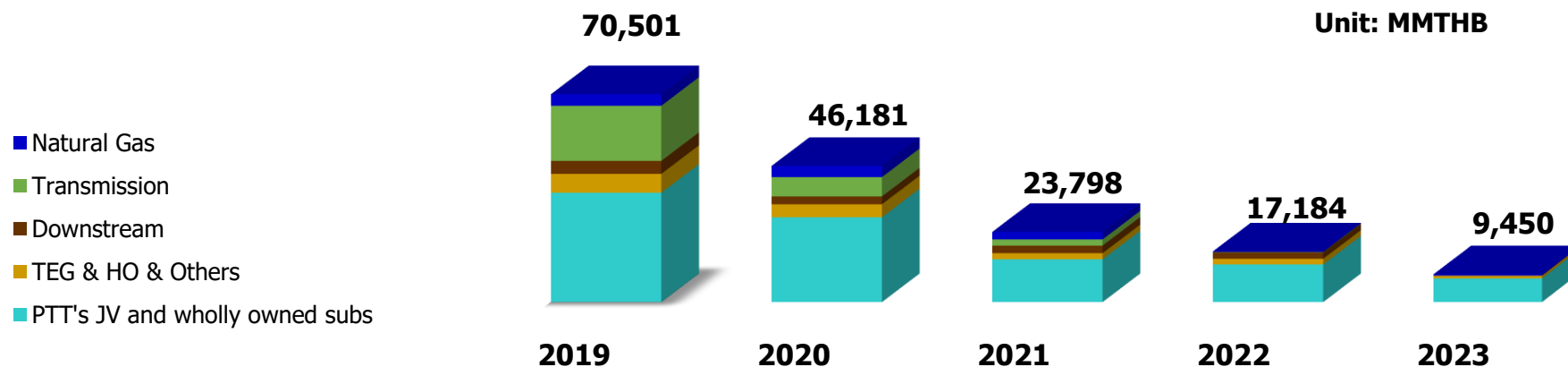
PTT plans to invest ~Bt 167bn* (\$5bn) during 2019-2023



Additional Provisional CAPEX = Baht 187 bn

- LNG Value Chain
- New S-Curves

PTT 5-Years Committed CAPEX Plan ~Bt 167 bn



* 2019-2023 budget approved by BOD on 21 Dec 18

Thank you



PTT Public Company Limited – Investor Relations Department



Tel. +66 2 537-3518, Fax. +66 2 537-3948



E-mail: ptt-ir@pttplc.com



Website: <http://www.pttplc.com>

Disclaimer

The information contained in our presentation is intended solely for your personal reference only. Please do not circulate this material. If you are not an intended recipient, you must not read, disclose, copy, retain, distribute or take any action in reliance upon it. In addition, such information contains projections and forward-looking statements that reflect our current views with respect to future events, financial performance and result of PTT's activities. These views are based on assumptions subject to various risks and uncertainties. No assurance is given that future events will occur, that projections will be achieved, or that our assumptions are correct. Actual results may differ materially from those projected.

The information contained in this presentation is subject to change without notice and PTT does not undertake any duty to update the forward-looking statements, and the estimates and assumptions associated with them, except to the extent required by applicable laws and regulations.